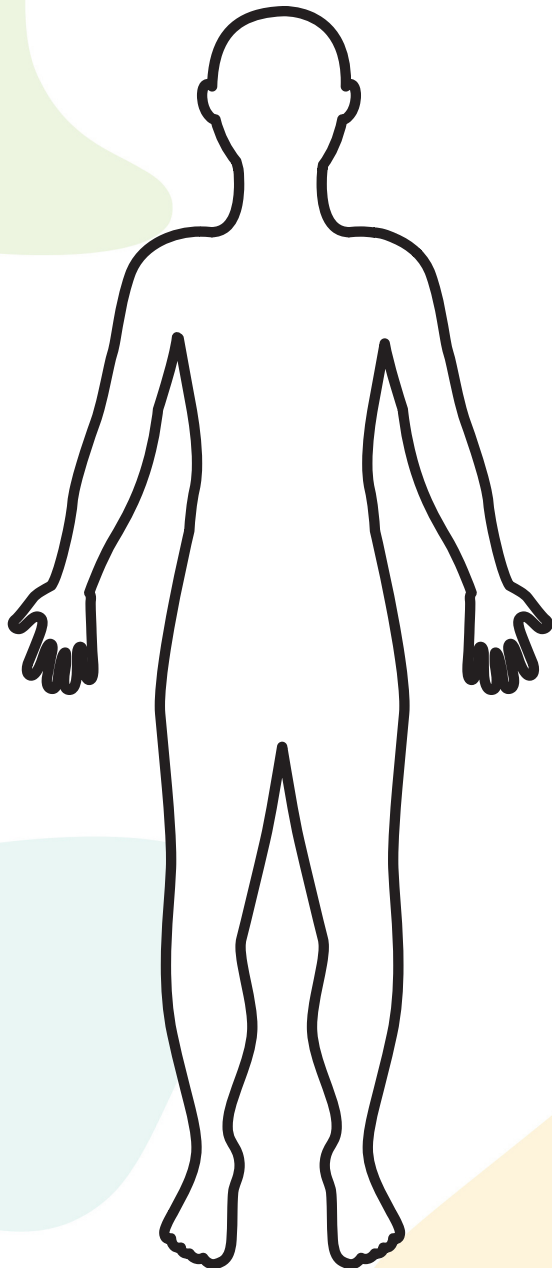




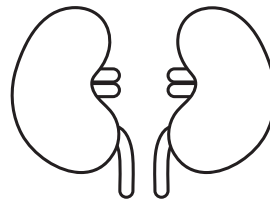
# Lesson 10: Donation

Worksheet 2 of 4

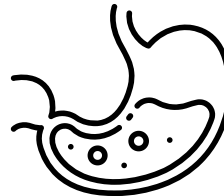
Draw a line from each organ to where it is located on the body below. Color the organs.



Lungs



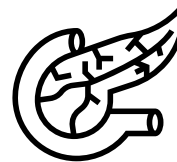
Kidneys



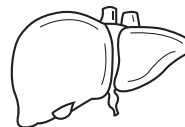
Stomach



Heart



Pancreas



Liver



# Lesson 10: Donation

Worksheet 3 of 4

**Organs considered for donation. Match the picture to the description.**

As the hardest working muscle, it is responsible for pumping blood throughout the body.

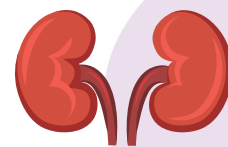
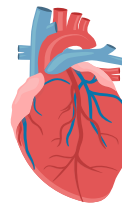
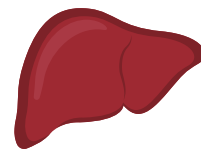
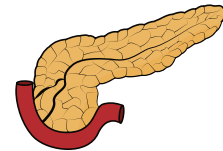
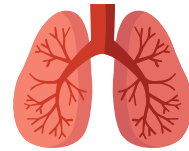
Filter waste and excess water from the blood to balance fluid in the body.

Air is carried here, and small air sacs extract oxygen and exchange it for carbon dioxide.

Breaks down harmful substances in the blood, aids in digestion and stores vitamins, sugars and fats.

Makes insulin, which helps the body use sugar for energy and produces enzymes to break down fat, protein and carbohydrates.

Digests food and absorbs nutrients back into the bloodstream.





# Lesson 10: Donation

Worksheet 4 of 4

**Answer the following questions.**

What are three body tissues besides organs that can be donated to someone in need?

---

---

---

---

What are three reasons that someone might need a skin transplant?

---

---

---

---

What are two reasons someone might need a bone transplant?

---

---

---

---